

Parabolic Antenna Technical Sheet



Applications

- 3.5GHz wireless access system
- 3.5GHz WiMax system
- Wireless bridges

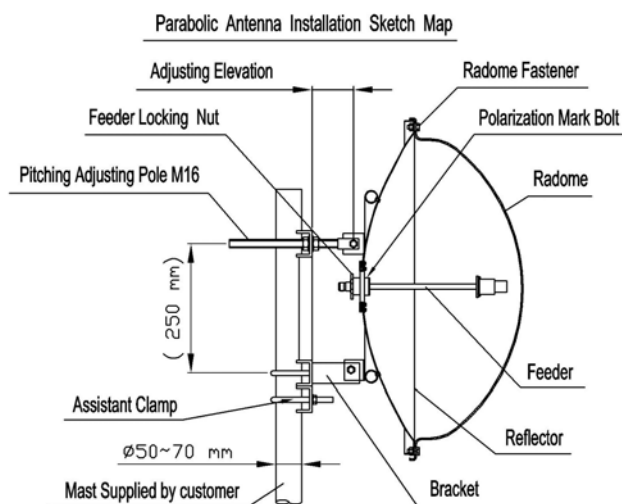
Features

- High gain, low VSWR, high F/B ratio
- Small size, easy to mount
- Die cast Aluminum reflector dish
- UV stable coat finish
- Strong adaptability of environment
- Compatible with vertical or horizontal Polarization
- Supplied with down-tilt & swivel bracket

Specifications

Model	TDJ-3338P6-Z
Freq.Range-MHz	3300~3800
Bandwidth-MHz	500
Gain-dBi	24.5
Beamwidth-°	E:10 H:10
F/B Ratio-dB	≥32
VSWR	≤1.5
Impedance-Ω	50
Polarization	Vertical or Horizontal
Max.Power-W	100
Lightning Protection	DC Grounded
Connector	N Female
Dimension-m	Φ0.6
Weight-Kg	5
Mast Diameter-mm	Φ50 to Φ70

Installation Sketch



Installation:

1. Install the feeder on the reflector according to the sketch map .and Make sure the polarization meet the client's requirement. When the polarization mark bolt (black carriage bolt) lock upside or downside, antenna is vertical polarized. When the bolt lock at left or right slot , it is horizontal polarized.
2. Install the bracket on the reflector, fix the mast to the reflector.
3. Fasten the assistant clamp on the mast. Then mount the antenna on the mast according to the sketch map.
4. Use equipment to test the receiving signal. Adjust the antenna azimuth and pitching angle to make the receiving signal maximum. Fasten all the screws and seal the connector which connect the antenna and cable.