

TDJ-3500BKB16

3.5GHz Broadband Flat Panel Antenna

Technical Sheet



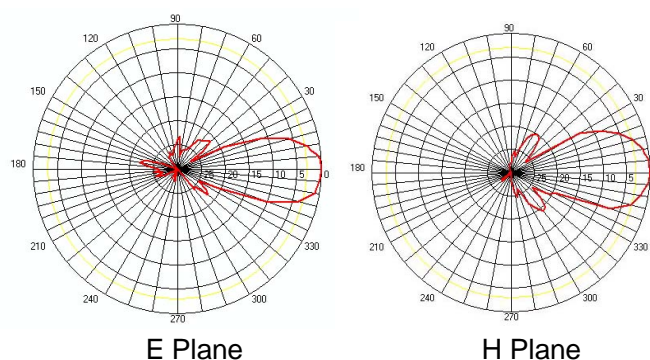
Applications

- 3.5GHz Fixed Wireless Access System
- WiMAX
- Support 802.16 Series Standard
- LMDS

Features

- Broad Band, High Gain, Low VSWR
- Light Weight, Compact Size, Stable Structure
- Supplied with Mast Mounting Kit

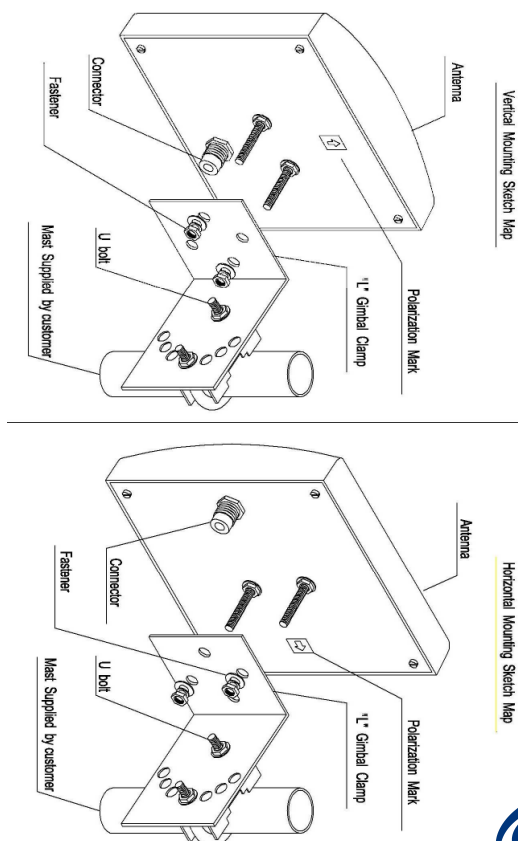
Reference Patterns



Specifications

Model	TDJ-3500BKB16
Freq.Range-MHz	3400 to 3600
Bandwidth-MHz	200
Gain-dBi	16
Beamwidth-°	E:24 H:30
F/B Ratio-dB	≥30
VSWR	≤1.5
Impedance-Ω	50
Polarization	Vertical or Horizontal
Max.Power-W	100
Connector	N Female or Customized
Dimensions-mm	250×190×50
Weight-Kg	1.5
Mast Diameter-mm	40 to 50

Installation Sketch



Note: The arrow at the back of the antenna shows the polarization. Please ensure the water discharge hole of the radome face down.