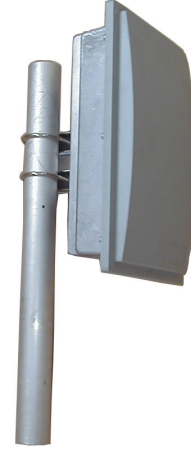


Sector Panel Antennas

Technical Sheet

Main Features

- Specially designed for 5.1/5.5/5.8GHz communication system
- Heavy-duty structure, Waterproof design, Easy to mount
- High gain, Low VSWR
- Good appearance
- Integrated cavity for customer's equipment



Electrical Specifications

Model		TDJ-5158K20	TDJ-5158K20H
Frequency Range-MHz	5150-5850		
Bandwidth-MHz	700		
Gain-dBi	20		
Polarization	Vertical	Horizontal	
Beamwidth-°	Horizontal Plane	20	
	Vertical Plane	10	
F/B Ratio-dB	≥25		
VSWR	≤1.5		
Impedance-Ω	50		
Power Capacity-W	100		

Mechanical & Environmental Specifications

Connector	SMA female or customized
Dimensions(LxWxD)-mm	320×200×100
Weight-Kg	2
Mounting	Mast
Mounting Mast Diameter-mm	Φ40 to Φ65
Operating Temperature-°C	-40 to +60
Relative Humidity	5% to 95%
Rated Wind Velocity-m/s	60