

TDJ-2400SPL Series Grid Parabolic Antennas Technical Sheet



Applications

- 2.4GHz WLAN System
- Support IEEE802.11a,g
- Long Distance Communication
- Point to Point, Point to Multi-point System
- Wireless Bridges

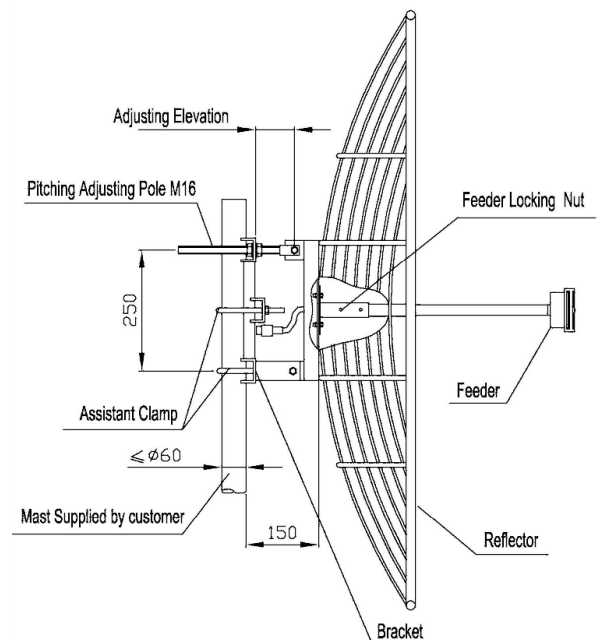
Features

- High Gain, Low VSWR
- Welded Aluminum Grid Reflector
- UV stable light gray powder coat finish
- Vertical or Horizontal Polarization Mounting
- Down-Tilt Mounting Bracket included

Specifications

Model	TDJ-2400 SPL12	TDJ-2400 SPL15	TDJ-2400 SPL18
Freq. Range-MHz	2400 to 2483		
Bandwidth-MHz	83		
Gain-dBi	27	29	30.5
Beamwidth-°	E: 6.5 H: 6.5	E: 5.3 H: 5.3	E: 4.5 H: 4.5
F/B Ratio-dB	≥30		
VSWR	≤1.5		
Impedance-Ω	50		
Polarization	Vertical		
Max.Power-W	100		
Rated Wind Velocity-m/s	60		
Connector	N Female or Customization		
Dimension-m	φ 1.2	φ 1.5	φ 1.8
Weight-Kg	20	25	30

Installation Sketch



Installation:

1. Mount the feeder horns on the reflector. Make sure the polarization meets your requirement.
2. Install the bracket on the reflector.
3. Fasten the assistant clamp on the mast. Then mount the antenna on the mast according to the sketch map.
4. Use equipment to test the receiving signal. Adjust the antenna azimuth and pitching angle to make the receiving signal maximum. Fasten all the screws and seal the connector which connect the antenna and cable.