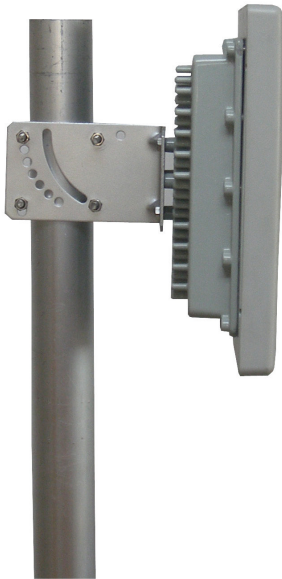


TDJ-2400BKR-C

2.4GHz Flat Antenna

Data Sheet



Applications

- 2.4GHz WLAN System
- Point to Point or Point to Multipoint
- 2.4GHz Wireless Bridges

Features

- High Gain ,Low Profile
- Outdoor Used, Corrosion Resistance
- Compatible for Vertical/Horizontal Polarization
- Supplied with Mast Mounting Kit
- Integrated Cavity for Customer's equipment
- The Pitching Angle is Adjustable

Specifications

Model	TDJ-2400BKR-C
Freq. Range-MHz	2400 to 2483
Gain-dBi	17
Beamwidth-°	E:23 H:23
VSWR	≤1.5
F/B Ratio-dB	≥25
Impedance-Ω	50
Polarization	Vertical or Horizontal
Max Power-W	50
Connector Type	SMA Male or Customized
Antenna Size-mm	261×261×35
Weight-Kg	2
Pole Diameter-mm	φ 40 to 50

Installation Sketch

