

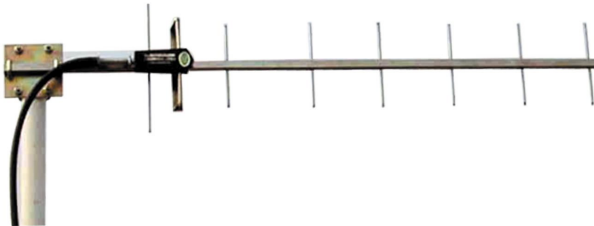
# TDJ-900L

## Yagi Antenna

### Technical Sheet

#### Applications

- 800MHz/ 900MHz band
- GSM900/IS95 mobile communications system
- Point to multipoint system
- RFID
- Repeater receiving antenna
- Long-distance terminal antenna



#### Features

- Broad band, High gain, Low VSWR
- High quality stainless steel material
- Simple structure, Stable
- Strong adaptability of environment
- The connector with a pigtail
- Vertical or horizontal polarization

#### Specifications

Model	TDJ-900L
Elements	8
Freq.Range-MHz	806 to 960
Bandwidth-MHz	70
Gain-dBi	11.2
VSWR	≤1.5
Ver.Beamwidth-°	40
Hor.Beawidth-°	48
F/B Ratio-dB	≥16
Impedance-Ω	50
Polarization	Vertical or Horizontal
Max.Power-W	100
Connector	N female or customized
Length-cm	94
Weight-Kg	0.9
Mast Diameter-mm	φ 40 to 50

#### Installation Sketch

