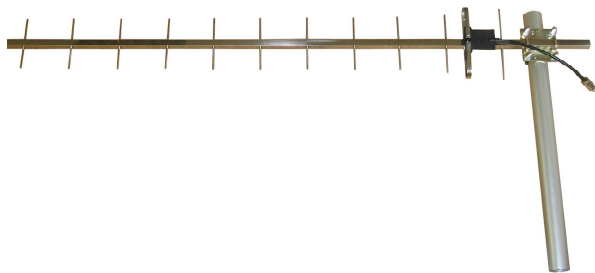


TDJ-900K

Yagi Antenna

Technical Sheet



Applications

- CDMA/GSM/RFID System
- Repeater Station or Long Distance terminal
- Highway or tunnel coverage or long distance receive

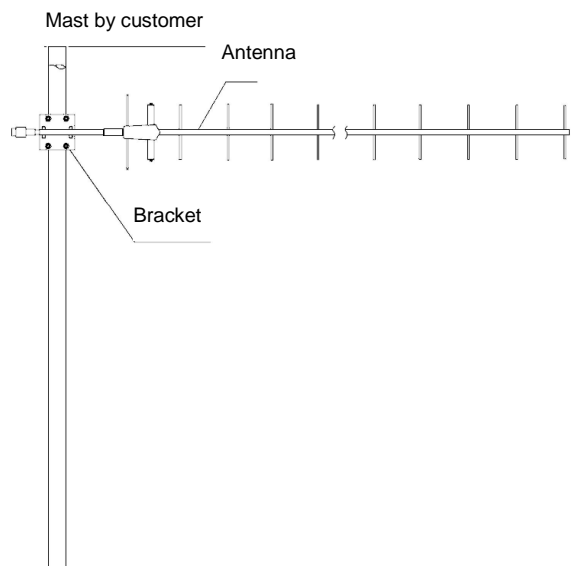
Features

- High Gain, Low VSWR
- Stainless Steel, Strong corrosion resistance
- Compatible with Vertical or Horizontal Polarization

Specification

Model	TDJ-900K
Elements	12
Freq.Range-MHz	806-960
Bandwidth-MHz	70
Gain-dBi	12
Beamwidth-°	E:32 H:36
F/B Ratio-dB	≥18
VSWR	≤2
Impedance-Ω	50
Polarization	Vertical
Max.Power-W	100
Connector	N Female or customized
Length-m	1.43
Weight-Kg	1.1
Mast Diameter-mm	φ 40~50

Installation Sketch



1. Let the antenna face to the communication direction
2. Adjust antenna azimuth to make the signal maximum, and then lighten the screws
3. Wrap the connector with waterproof tape.