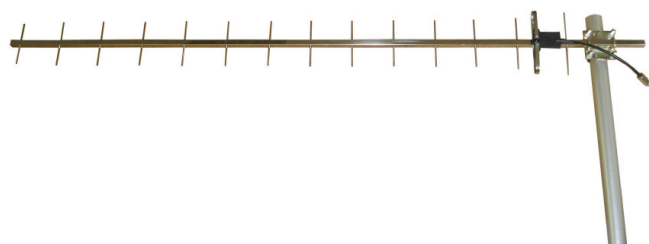


Yagi Antenna

Technical Sheet



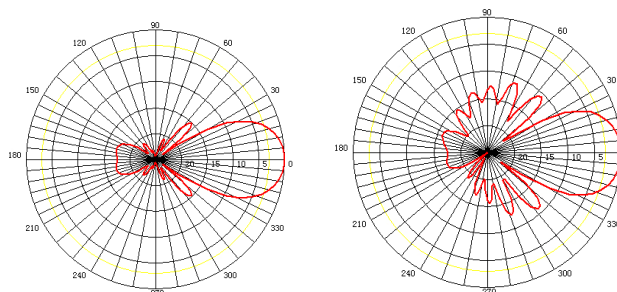
Applications

- CDMA/GSM/RFID System
- Repeater Station or Long Distance terminal
- Highway or tunnel coverage or long distance receive

Features

- High Gain, Low VSWR
- Stainless Steel, Strong corrosion resistance
- Compatible with Vertical or Horizontal Polarization

Reference Pattern



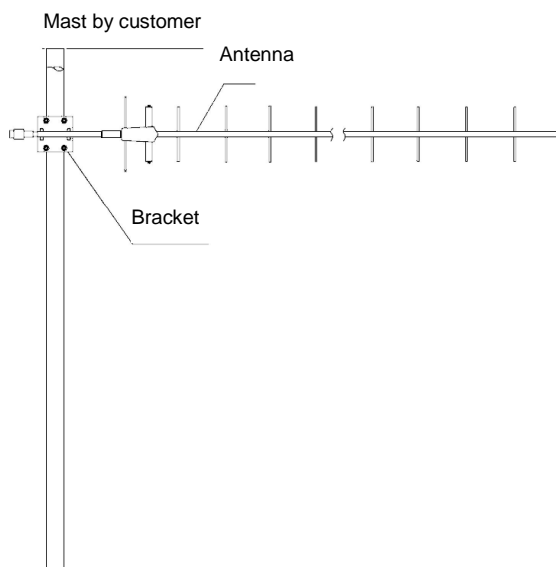
E-Plane

H-Plane

Specification

Model	TDJ-900F
Elements	15
Freq.Range-MHz	806-960
Bandwidth-MHz	70
Gain-dBi	13
Beamwidth-°	E: 30 H:30
F/B Ratio-dB	≥18
VSWR	≤1.5
Impedance-Ω	50
Polarization	Vertical
Max.Power-W	100
Connector	N Female or Customized
Length-m	1.63
Weight-Kg	1.25
Pole Diameter-mm	φ 40~ φ 50

Installation Sketch



1. Let the antenna face to the communication direction
2. Adjust antenna azimuth to make the signal maximum, and then tighten the screws
3. Wrap the connector with waterproof tape.