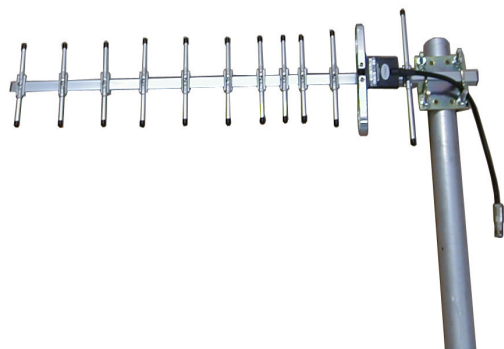


TDJ-900ACY12

Yagi Antenna

Technical Sheet



Applications

- GSM 900/CDMA800
- Repeater Antenna
- RFID System
- Wireless Video Links
- Cellular Communications

Features:

- Superior performance
- Heavy duty steel construction
- All weather operation
- Aluminum Alloy elements
- N-Female with pigtail
- Vertical or horizontal polarization Install
- Pole Mounting Kits

Specifications

Model	TDJ-900ACY12
Elements	12
Freq. Range-MHz	806~960
Bandwidth-MHz	154
Gain-dBi	12
Beamwidth -°	E:32 H:36
F/B-dB	≥18
VSWR	≤1.5
Impedance-Ω	50
Polarization	Vertical or Horizontal
Max. Power-W	100
Connector Type	N Female or Customization
Dimension-cm	88

Install Sketch

