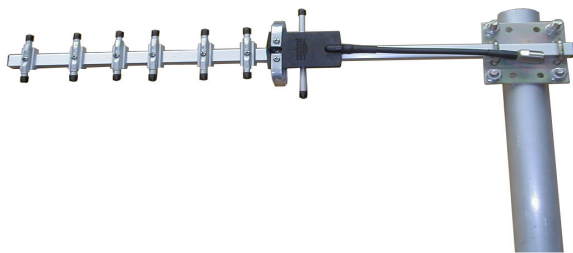


TDJ-1800ACY8

Yagi Antenna

Technical Sheet



Applications

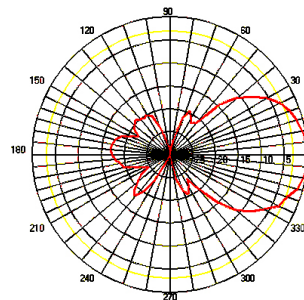
- 1800MHz band
- GSM1800 system
- Point to point or point to multi-point communication
- Repeater
- Long Distance client antenna

Features

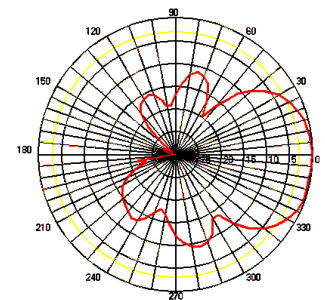
- High gain, high F/B ratio
- Long Distance Communication, great Anti-jamming
- High quality Aluminum alloy material
- Extend a low loss cable

Typical pattern

E-Plan @ 1800MHz



H-Plan @ 1800MHz



Specifications

| | |
|-------------------|---------------------------|
| Model | TDJ-1800ACY8 |
| Freq. Range -MHz | 1710~1990 |
| Bandwidth -MHz | 170 |
| Gain -dBi | 11.2 |
| Hor. Beamwidth -° | 48 |
| Ver. Beamwidth -° | 40 |
| F/B Ratio -dB | ≥16 |
| VSWR | ≤1.5 |
| Impedance -Ω | 50 |
| Polarization | Vertical or Horizontal |
| Max. Power -W | 100 |
| Connector | N Female or Customization |
| Length -cm | 55 |
| Weight -kg | 0.68 |
| Pole Diameter -mm | φ 40 to 50 |

Installation Sketch

