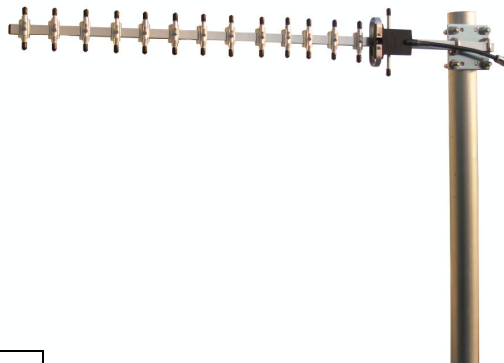


## Yagi Antenna

# Technical Sheet

### Main Features

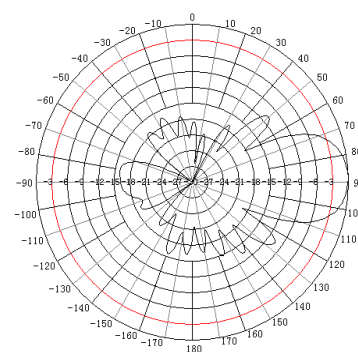
- 1.8GHz GSM band
- SCDMA system
- High gain
- Optimized dimensions
- Aluminum alloy structure, Steel mounting kit
- DC grounded protection



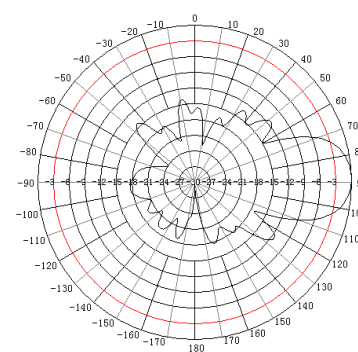
### Electrical Specifications

Model	TDJ-1800ACY15	
Freq.Range-MHz	1710 to 1880	
Bandwidth-MHz	170	
Gain-dBi	13	
Polarization	Vertical or Horizontal	
Beamwidth -°	H Plane	30
	E Plane	30
F/B Ratio-dB	≥18	
VSWR	≤1.5	
Impedance-Ω	50	
Power Capacity-W	50	
Lightning Protection	DC Grounded	

### Typical Patterns



H Plane



E Plane

### Mechanical & Environmental Specifications

Connector	N female or customized
Elements	15
Length-cm	82
Weight-kg	0.63
Mounting	Mast
Mast Diameter-mm	φ 40 to φ 50
Operating Temperature-°C	-40 to +60
Relative Humidity	5% to 95%
Rated Wind Velocity-m/s	60

### Optional Accessories

Optional mounting kit, Surge protector, RF jumper cable etc.