

# TDJ-900SPL18B

## Grid parabolic Antenna

### Technical Sheet



The picture is only for reference, please kindly consult with the real product

#### Applications

- 806~960MHz Band
- Point to point system
- Repeater system

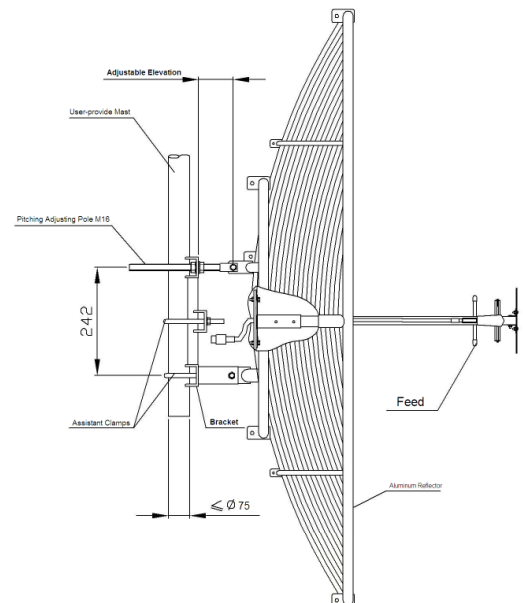
#### Features

- High Gain, F/B Ratio
- Aluminum Alloy material, UV Stable Coat Finish
- Supplied with down-tilt mounting bracket

#### Specifications

Model	TDJ-900SPL18B
Freq. Range-MHz	806~960
Bandwidth-MHz	70
Gain-dBi	21.5
Beamwidth-°	E:11 H:11
F/B Ratio-dB	≥30
VSWR	≤1.5
Impedance-Ω	50
Polarization	Vertical
Max. Power-W	100
Connector	N Female or customized
Diameter-m	Φ1.8
Weight-Kg	20
Mast Diameter-mm	Φ50~Φ75

#### Installation Sketch



##### Installation Instructions:

1. First, combine the two halves of the reflector into one piece with match fasteners as shown in the figure.
2. Mount the feed on the reflector as figure; ensure the feed parallels the grid.
3. Mount the bracket on the reflector.
4. Install the assistant clamps on the mounting mast (user-provide) and fasten them tightly, then mount the antenna on the mounting mast as shown in the figure.
5. Test the receiving signal by instrument, adjust the azimuth and pitching angle to maximize the receiving signal, fasten all the nuts and waterproof the antenna and the connector.