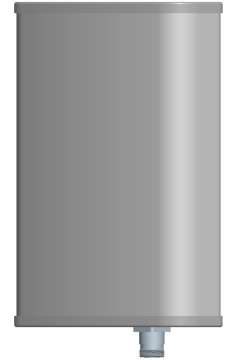




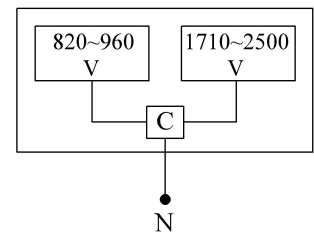
Multi-band Panel	820~960	1710~2500
Vertical Polarization	V	V
Half-power Beam Width	65°	65°
Fixed Electrical Downtilt	0°	0°

VVPo1 820~960/1710~2500MHz IC 65° 9/11.5dBi 0° /0° Tilt

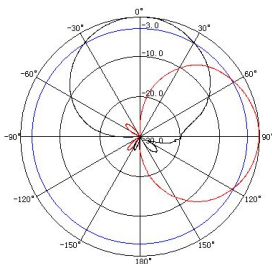
Electrical specifications	KBT65VP0912-0825GT0-C		
Frequency range (MHz)	820~960	1710~2200	2200~2500
Polarization	Vertical		
Gain (dBi)	9	11.5	11.5
Electrical Downtilt (°)	0	0	
Half-power beam width (°)	Horizontal:68 Vertical:60	Horizontal:68 Vertical:35	Horizontal:65 Vertical:30
Sidelobe suppression for first sidelobe above main beam (dB)	N/A	N/A	
Front-to-back ratio (dB)	≥20	≥25	
Cross-polar discrimination (dB)	N/A		
Impedance (Ω)	50		
VSWR	≤1.5	≤1.5	
Intermodulation IM3 (2×43dBm carrier)	≤-150dBc		
Maximum power (W)	400	200	
Lighting protection	DC Ground		



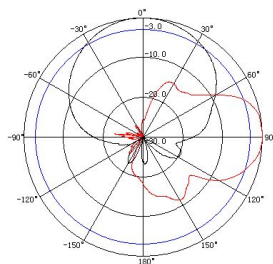
Mechanical specifications	
Connector	N Female
Connector position	Bottom
Height/width/depth (mm)	350×320×80
Packing size (mm)	450×400×170
Weight (kg)	3.5
Radome material	UPVC
Radome color	Gray
Mechanical tilt (°)	0~15
Operating temperature (°C)	-40~60
Rated wind velocity (m/s)	60
Suitable pole diameter (mm)	50~75
Mounting kit	JM-1800RZ1



820~960MHz: VPol.



1710~2200MHz: VPol.



2200~2500MHz: VPol.

