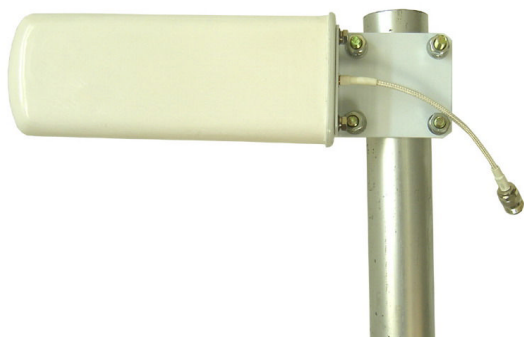


# TDJ-2000Y5A

## Directional Yagi Antenna

### Technical Sheet



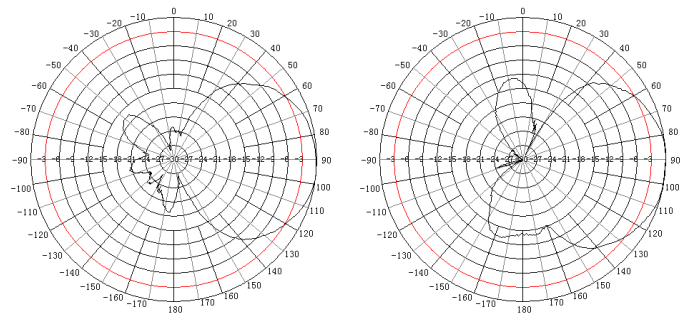
#### Applications

- IMT-2000 system
- WCDMA/CDMA2000
- Elevator shaft coverage
- Outdoor link antenna
- Community coverage

#### Features

- Milk white radome is in harmony with environment
- Small size, Light weight
- Waterproof, Suitable for indoor/outdoor environment
- Fiberglass radome, Durable

#### Reference Patterns



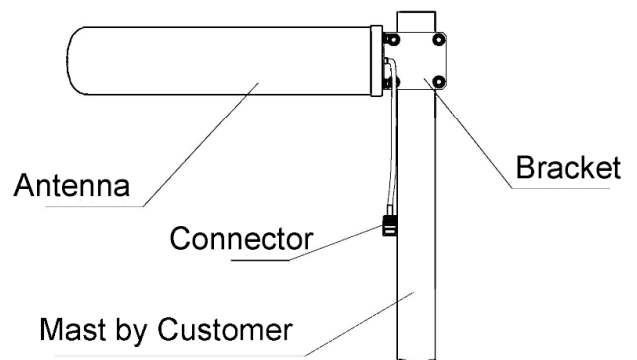
E Plane

H Plane

#### Specifications

Model	TDJ-2000Y5A
Freq.Range-MHz	1920 to 2170
Bandwidth-MHz	250
Gain-dBi	9
Hor.Beamwidth-°	65
Ver.Beamwidth-°	54
F/B Ratio-dB	≥15
VSWR	≤1.5
Impedance-Ω	50
Polarization	Vertical
Max.Power-W	50
Connector	N female or customized
Dimensions-mm	245×95×40
Mast Diameter-mm	Φ40 to 50

#### Installation Sketch



1. Assembly the antenna as figure, then fix it on the mast;
2. Adjust the angle of the antenna to optimize the communication effect;
3. Make the water hole adown when outdoor used;
4. Fix all the screws, and then waterproof the connector.