

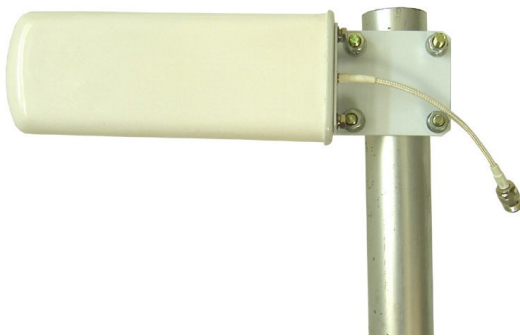
TDJ-2000Y15A

Yagi Antenna

Technical sheet

Applications

- IMT-2000 system
- WCDMA/CDMA2000
- Outdoor Antenna
- Community coverage



Features

- High Gain, High F/B Ratio
- Waterproof design, Suitable for all kinds of environment
- Fiberglass Radome
- Extend a Low Loss Cable

Specifications

Model	TDJ-2000Y15A
Freq. Range-MHz	1920 to 2170
Bandwidth-MHz	250
Gain-dBi	13
Hor. Beamwidth-°	35
Ver. Beamwidth-°	33
F/B Ratio-dB	≥20
VSWR	≤1.5
Impedance-Ω	50
Polarization	Vertical
Max. Power-W	50
Connector	N Female
Dimension-mm	510×95×40
Note: When installed outdoor, you should make the side with a hole face down to prevent the rain into the radome.	

Installation Sketch

