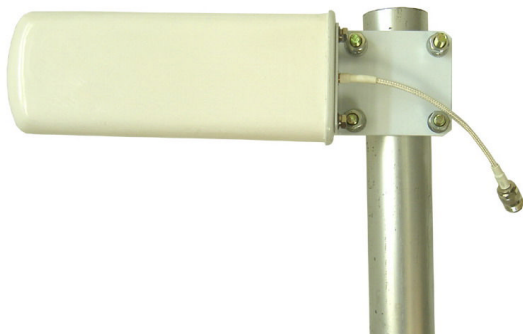


TDJ-2000Y13A

Directional Yagi Antenna

Technical Sheet



Applications

- 3G system
- Outdoor link antenna
- Indoor coverage system

Features

- High gain, High F/B ratio
- Milk white radome , in harmony with environment
- Waterproof, Suitable for indoor & outdoor environment
- Sealed with fiberglass, Durable
- The connector with a low loss cable

Specifications

Model	TDJ-2000Y13A
Freq.Range-MHz	1920 to 2170
Bandwidth-MHz	250
Gain-dBi	12
Hor.Beamwidth-°	42
Ver.Beamwidth-°	38
F/B Ratio-dB	≥20
VSWR	≤1.5
Impedance-Ω	50
Polarization	Vertical
Max.Power-W	50
Connector	N Female or customized
Dimensions-mm	420×95×40
Note:When outdoor used, please face down the plug hole on the radome to prevent the antenna from water.	

Installation Sketch

