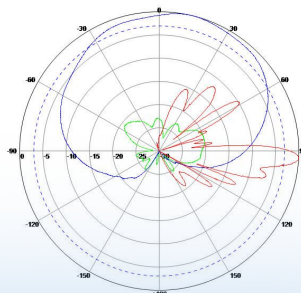




Multi-band Panel	1400~1525	1750~1900
Dual Polarization	X	
Fixed Electrical Downtilt	6°	

## Dual Polarized Smart Antenna Technical Sheet 1400~1900MHz 105° 65° 15dBi 6° Tilt

Electrical specifications		KDA4-1419D15BT6	
Frequency range (MHz)		1400~1525	1750~1900
Polarization		±45°	
Electrical Downtilt (°)		6	
Down-tilt Precision(°)		±1	
V.S.W.R.		≤1.5	
Isolation between Co-polarization Ports(dB)		≥28	
Isolation between Cross-polarization Ports(dB)		≥28	
Transmission from Any Column's Port to Calibration Port(dB)		-26±2	
Max.Altitude Difference between Calibration Port and Each Radiation Port (dB)		≤0.7	
Max.Phase Difference between Calibration Port and Each Radiation Port (°)		≤5	
Single Column	Horizontal -3dB Beamwidth (°)	105±15	65±15
	Gain(dBi)	≥14	
	Cross Polar Ratio (dB)	≥18, ±60°	≥10
	Front-to-back Ratio(dB)	≥23	≥25
Broadcasting Pattern	Horizontal Beamwidth(°)	65±5	
	Vertical Beamwidth(°)	≥7	≥6
	Gain(dBi)	≥15	
	Edge level at ±60°(dB)	12±2	
	Cross Polar Ratio (dB)	≥22, ±60°	≥10
	Front-to-back Ratio(dB)	≥28	
	First Upper Side Lobe Suppression (dB)	≤-15	
First zero level(dB)	≥-18		
Traffic Beam Pattern	Gain for Operation Pattern at 0° Direction (dBi)	≥19	≥20
	Horizontal Beamwidth for Operation Pattern at 0° Direction (°)	≤29	≤23
	Horizontal Minor Electric Level for Operation Pattern at 0° Direction (dB)	≤-12	
	±60° Direction Gain(dBi)	≥18	
	Horizontal Beamwidth for Operation Pattern at ±60° Direction (°)	≤34	≤28
	Horizontal Minor Electric Level for Operation Pattern at ±60° Direction (dB)	≤-5	≤-4
	Cross Polar Ratio for Operation Pattern at 0° Direction (Main-direction)	≥22	
	Front-to-back Ratio for Operation Pattern at 0° Direction (dB)	≥28	



5Tacche è il marchio di Telecomsatitalia srl  
 ☎ 080 397 57 86 P.IVA:06599340723  
[www.5tacche.it](http://www.5tacche.it)

# MAI PIU' SENZA SEGNALE!

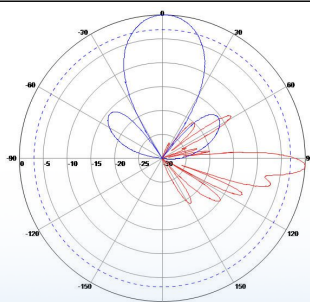


Multi-band Panel	1400~1525	1750~1900
Dual Polarization		X
Fixed Electrical Downtilt		6°

Mechanical specifications	
Connector	(8+1) × N Female
Connector position	Bottom
Height/width/depth (mm)	(1610 × 402 × 135) ± 10
Weight (kg) (without bracket)	17 ± 1
Radome material	UPVC
Radome color	Gray
Mechanical tilt (°)	0 ~ 15
Operating temperature (°C)	-40 ~ 60
Rated wind velocity (m/s)	60
(mm)	70 ~ 115
Ports Sketch	



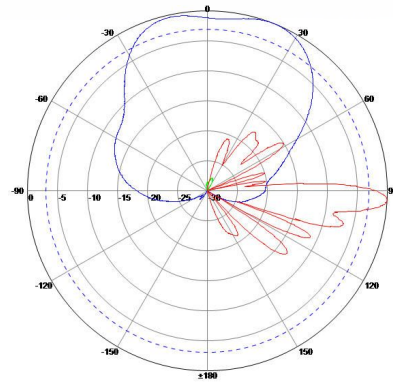
Antenna Weight						
	Frequency (MHz)	Port	1/5	2/6	3/7	4/8
0° Traffic Beam Pattern	1400~1525 1750~1900	Altitude	1	1	1	1
		Phase (°)	0	0	0	0
60° Traffic Beam Pattern	1400~1525	Altitude	1	1	1	1
		Phase (°)	0	-110	-220	-330
	1750~1900	Altitude	1	1	1	1
		Phase (°)	0	-137	-274	-51
65° Broadcasting Pattern	1400~1525	Altitude	0.3	1	1	0.3
		Phase (°)	-18	-6	0	-168
	1750~1900	Altitude	0.1	1	1	0.4
		Phase (°)	20	0	-12	-180



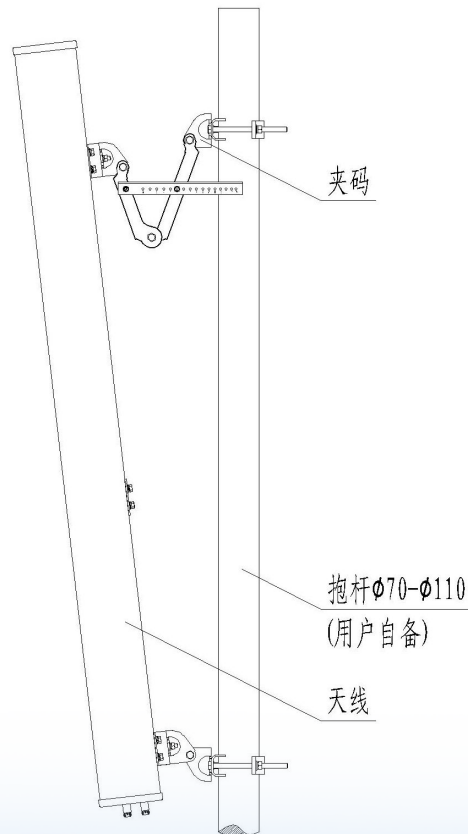
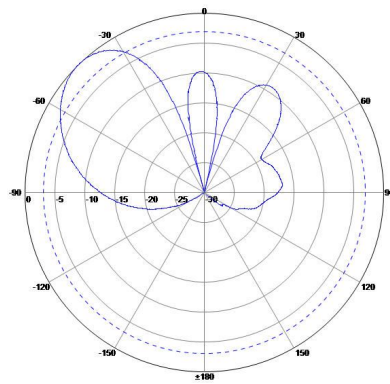
5Tacche è il marchio di Telecomsatitalia srl  
 ☎ 080 397 57 86 P.IVA:06599340723  
[www.5tacche.it](http://www.5tacche.it)

MAI PIU' SENZA SEGNALE!

Pattern 65°



Pattern 60°



Installation Sketch

5Tacche è il marchio di Telecomsatitalia srl  
 ☎ 080 397 57 86 P.IVA:06599340723  
[www.5tacche.it](http://www.5tacche.it)