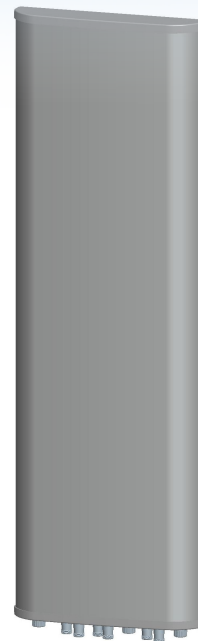


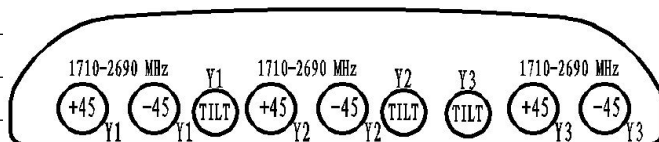


XXXPol 1710~2690MHz*3 65° 17.5dBi 0°-10°Tilt

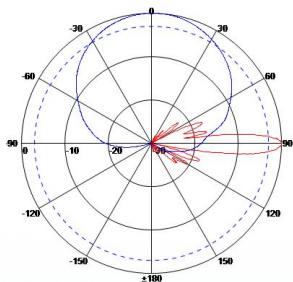
Electrical specifications	KBT65DP181818-1727AE			
Frequency range (MHz)	1710~1990	1920~2200	2200~2490	2490~2690
Polarization	±45°			
Gain (dBi)	6*17.3	6*17.5	6*17.8	6×18
Electrical Downtilt (°)	0~10			
Half-power beam width (°)	Horizontal:68 Vertical:7	Horizontal:65 Vertical:6.5	Horizontal:62 Vertical:6	Horizontal:60 Vertical:5.5
Sidelobe suppression for first sidelobe above main beam (dB)	0°...5°...10° 15...15...15			
Front-to-back ratio (dB)	≥25			
Cross-polar discrimination (dB)	≥15(±60°≥10)			
Isolation (dB)	≥28			
Impedance (Ω)	50			
VSWR	≤1.5			
Intermodulation IM3 (2×43dBm carrier)	≤-150dBc			
Maximum power (W)	250			
Lighting protection	DC Ground			



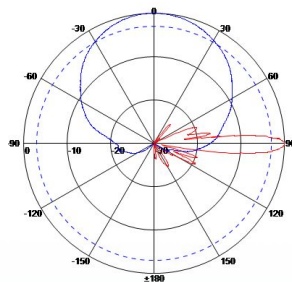
Mechanical specifications	
Connector	6*7/16DIN Female
Connector position	Bottom
Height/width/depth (mm)	1350*515*100
Packing size (mm)	1630*610*200
Weight (kg)	25
Radome material	UPVC
Radome color	Gray
Mechanical tilt (°)	0~15
Operating temperature (°C)	-40~60
Rated wind velocity (m/s)	60
Suitable pole diameter (mm)	50~115
Mounting kit	JM-900BZ2A
Electrical downtilt adjustment	Manual or by optional RCU



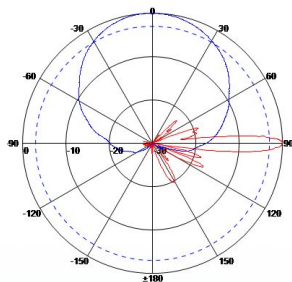
1710~1990MHz: ±45° Pol.



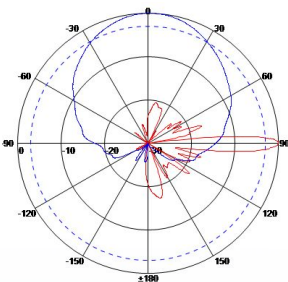
1920~2200MHz: ±45° Pol.



2200~2490MHz: ±45° Pol.



2490~2690MHz: ±45° Pol.



5Tacche è il marchio di Telecomsatitalia srl
 ☎ 080 397 57 86 P.IVA:06599340723
www.5tacche.it

MAI PIU' SENZA SEGNALI FI