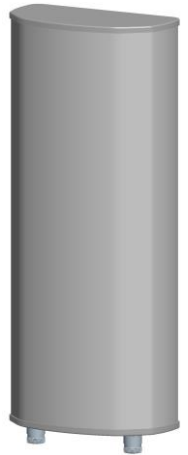




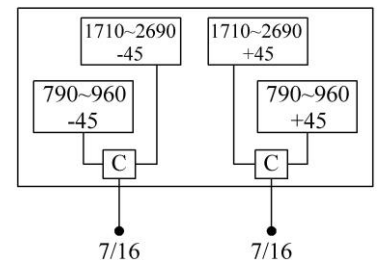
Multi-band Panel	790~960	1710~2690
Dual Polarization	X	X
Half-power Beam Width	65°	65°
Fixed Electrical Downtilt	0°	0°

XXPo1 790~960/1710~2690MHz IC 65° 11.5/13.5dBi 0° /0° Tilt

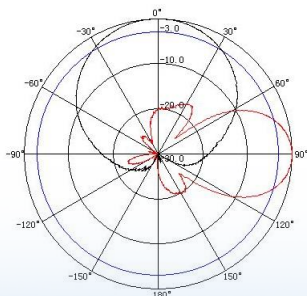
Electrical specifications	KBT65DP1214-0827GT0-C				
Frequency range (MHz)	790-896	870-960	1710-1880	1850-2170	2170-2690
Polarization	±45°				
Gain (dBi)	2×11.2	2×11.5	2×13.2	2×13.5	2×13.8
Electrical Downtilt (°)	0		0		
Half-power beam width (°)	Hor.:68 Ver.:34	Hor.:65 Ver.:30	Hor.:65 Ver.:17	Hor.:64 Ver.:15	Hor.:62 Ver.:13.5
Sidelobe suppression for first sidelobe above main beam (dB)	≥13		≥15		
Front-to-back ratio (dB)	≥22		≥23		
Cross-polar discrimination (dB)	≥15(±60°≥10)		≥15(±60°≥10)		
Isolation (dB)	≥28		≥28		
Impedance (Ω)	50				
VSWR	≤1.5		≤1.5		
Intermodulation IM3 (2×43dBm carrier)	≤-150dBc				
Maximum power (W)	400		200		
Lighting protection	DC Ground				



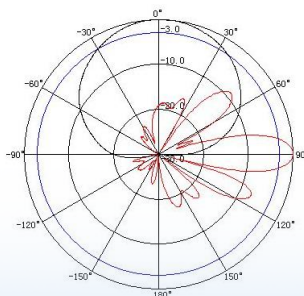
Mechanical specifications	
Connector	2×7/16DIN Female
Connector position	Bottom
Height/width/depth (mm)	600×320×110
Packing size (mm)	860×405×240
Weight (kg)	9.5
Radome material	UPVC
Radome color	Gray
Mechanical tilt (°)	0~15
Operating temperature (°C)	-40~60
Rated wind velocity (m/s)	60
Suitable pole diameter (mm)	50~115
Mounting kit	JM-900BZ1



790~960MHz: ±45° Pol.



1710~2690MHz: ±45° Pol.



5Tacche è il marchio di Telecomsatitalia srl
 ☎ 080 397 57 86 P.IVA:06599340723
www.5tacche.it

MAI PIU' SENZA SEGNALE!