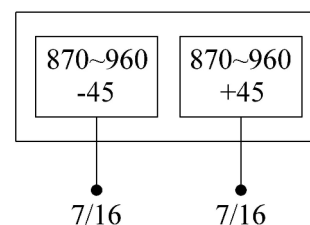
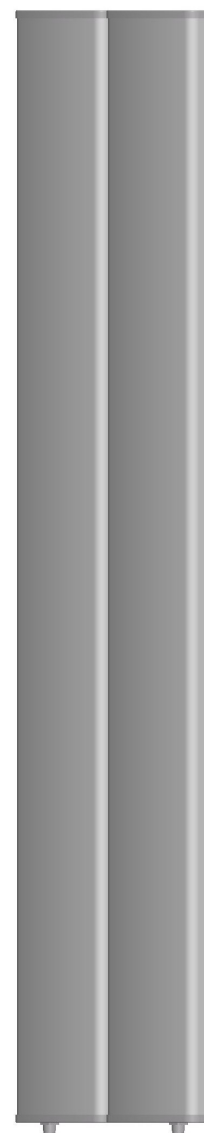


XPol 870~960MHz 33° 20dBi 0° Tilt

Electrical specifications	KBT30DP20-09AT0
Frequency range (MHz)	870~960
Polarization	±45°
Gain (dBi)	2×20
Electrical Downtilt (°)	0
Half-power beam width (°)	Horizontal:33 Vertical:7
Sidelobe suppression for first sidelobe above main beam (dB)	≥15
Front-to-back ratio (dB)	≥27
Cross-polar discrimination (dB)	≥15(±30°≥10)
Isolation (dB)	≥30
Impedance (Ω)	50
VSWR	≤1.4
Intermodulation IM3 (2×43dBm carrier)	≤150dBc
Maximum power (W)	500
Lighting protection	DC Ground

Mechanical specifications	
Connector	2×7/16DIN Female
Connector position	Bottom
Height/width/depth (mm)	2530×570×85
Packing size (mm)	2730×620×160
Weight (kg)	42
Radome material	UPVC
Radome color	Gray
Mechanical tilt (°)	0~10
Operating temperature (°C)	-40~60
Rated wind velocity (m/s)	60
Suitable pole diameter (mm)	50~115
Mounting kit	JM-900BZ3



870~960MHz: ±45° Polarization

