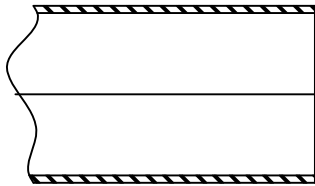


# TIMES MICROWAVE SYSTEMS

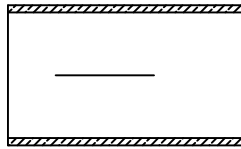
358 Hall Avenue/P.O. Box 5039  
 Wallingford, CT 06492-5039  
 Tel: 203-949-8400  
 FAX: 203-949-8423  
 1-800-TMS-COAX  
 www.timesmicrowave.com

## INSTALLATION INSTRUCTIONS

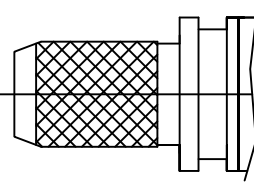
EZ-240-SM-RA (TIMES 3190-1536), EZ-240-QM-RA (TIMES 3190-1539),  
 EZ-240-NM (TIMES 3190-1127), EZ-240-SM (TIMES 3190-1530)  
 (Cable Types: LMR-240)



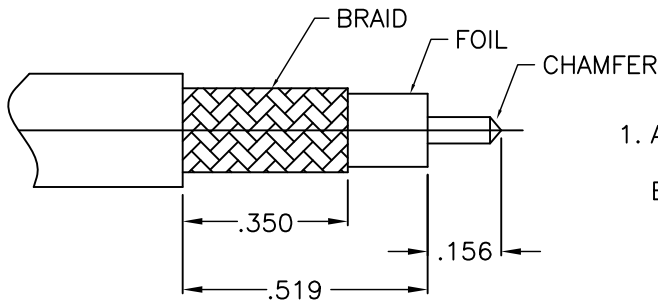
WEATHER SEAL



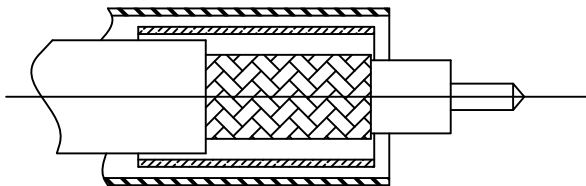
CRIMP SLEEVE



BODY ASSEMBLY

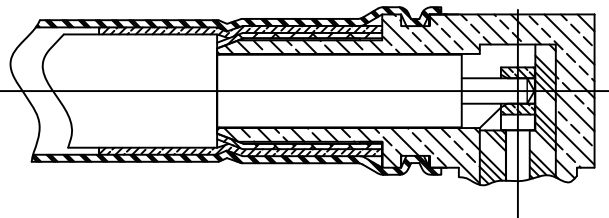


1. A. Trim cable per dimensions shown.  
 B. Remove any residual plastic from the center conductor and deburr center conductor using a Times DBT-02 tool.



2. A. Slide crimp sleeve and weather seal over cable.

3. A. Insert cable into connector until fully seated, with all braid wires on the outside of connector body and aluminum tape inside the connector body. Slide cable forward until center conductor snaps into center contact.



- B. Slide crimp sleeve forward and crimp as close as possible to body using a .255" hex die. Use Times HX-4 crimp tool or equivalent. Do not crimp rear of crimp sleeve.
- C. Heat shrink weather seal over rear of connector body, into groove on body and down onto cable jacket using hot air gun.

CAI-536 (rev A)

**DO NOT NICK BRAID**  
**WHEN TRIMMING CABLE !**